

Sala Consiliere T1

CREATED ON
2022-05-18

Total area 86.05 m ²	Floors 1	Rooms 1	Conf. room 1
---	--------------------	-------------------	------------------------

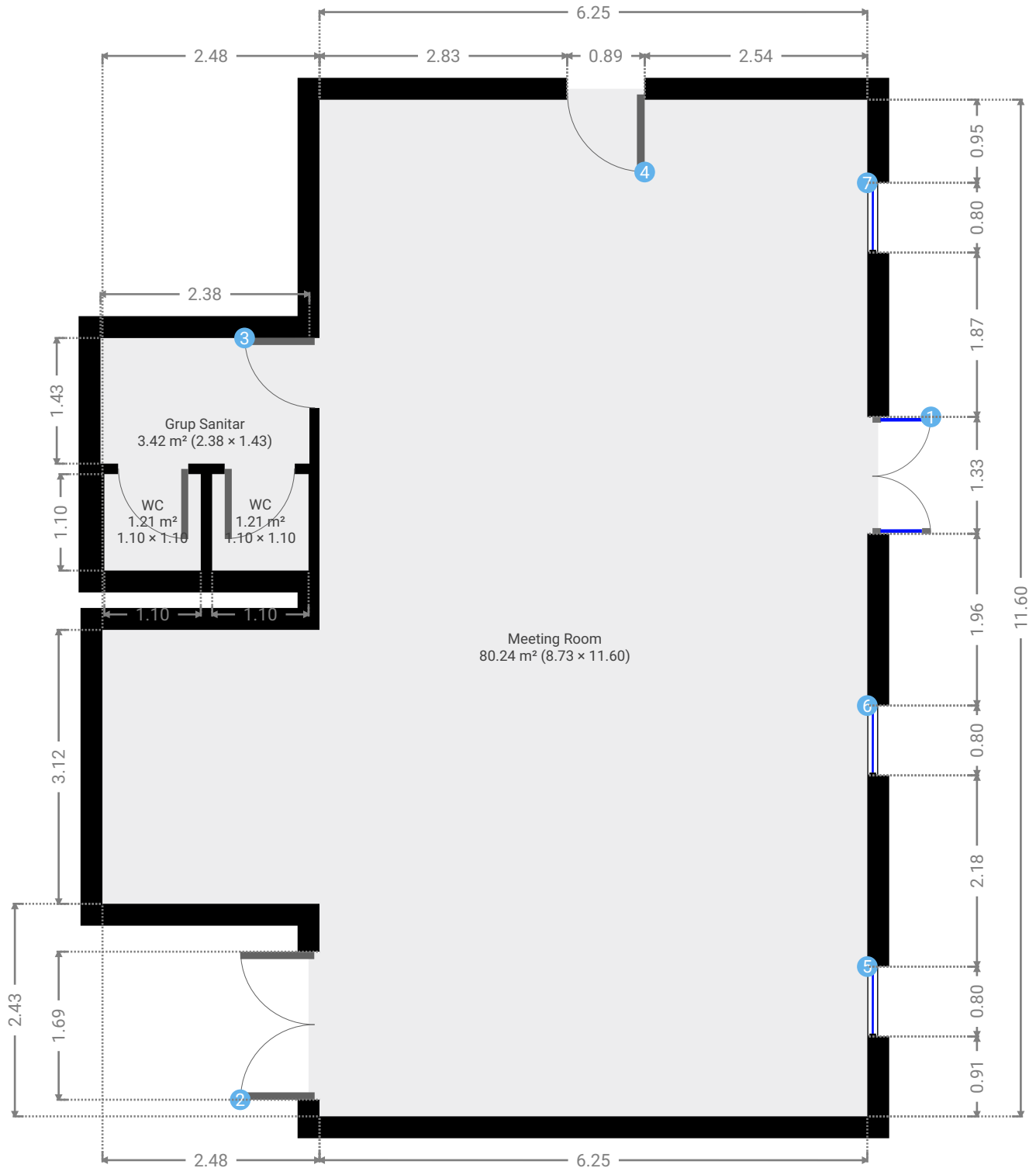
Sala Consiliere T1

TOTAL AREA: 86.05 m² • LIVING AREA: 86.05 m² • FLOORS: 1 • ROOMS: 1



▼ Ground Floor

TOTAL AREA: 86.05 m² • LIVING AREA: 86.05 m² • ROOMS: 1



THIS FLOORPLAN IS PROVIDED WITHOUT WARRANTY OF ANY KIND. SENSOPIA DISCLAIMS ANY WARRANTY INCLUDING, WITHOUT LIMITATION, SATISFACTORY QUALITY OR ACCURACY OF DIMENSIONS.

0 1 2 3m

1:67
Page 2/5

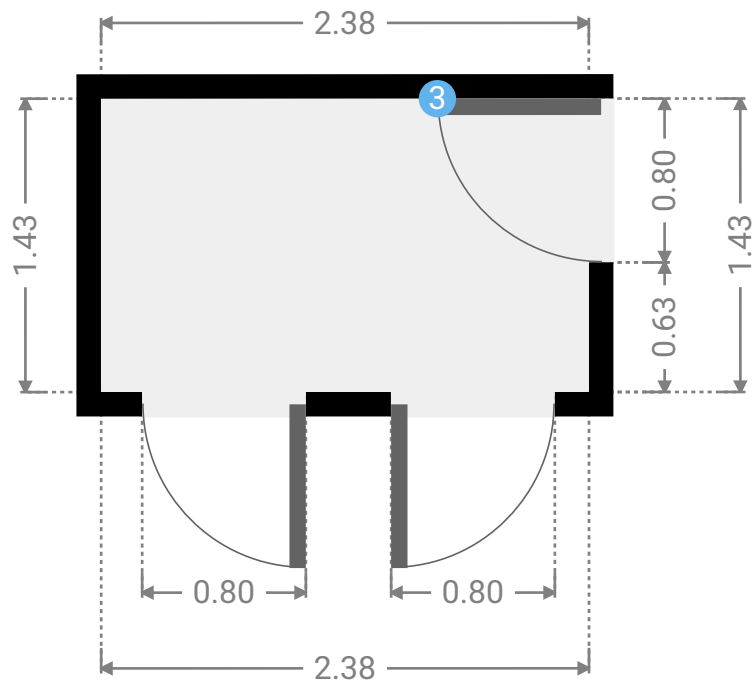
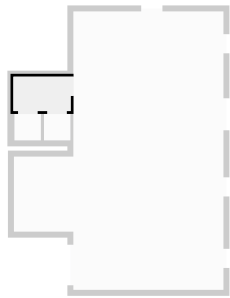
Sala Consiliere T1

TOTAL AREA: 86.05 m² • LIVING AREA: 86.05 m² • FLOORS: 1 • ROOMS: 1



▼ Grup Sanitar Ground Floor

WIDTH: 2.38 m • LENGTH: 1.43 m
AREA: 3.42 m² • PERIMETER: 7.64 m



▼ Grup Sanitar/Ground Floor

3 HINGED DOOR

Height
2.10 m



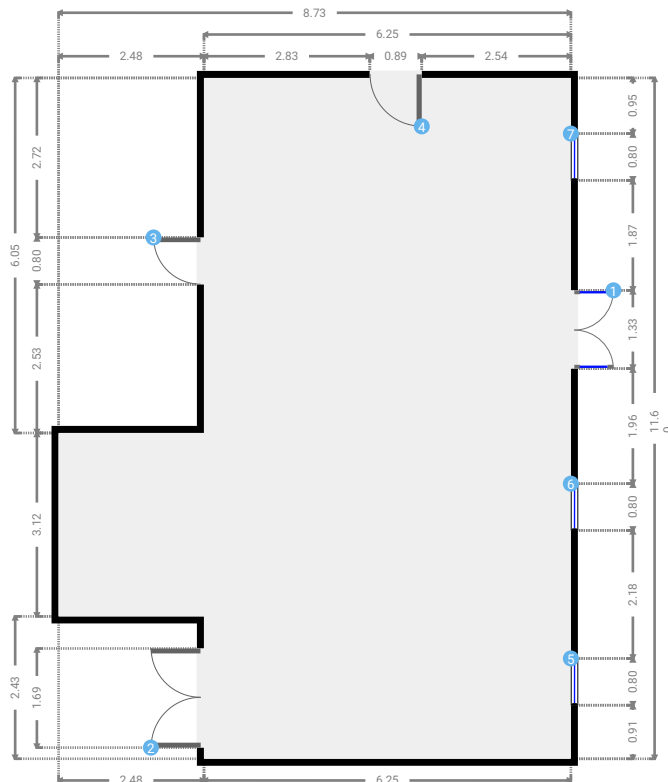
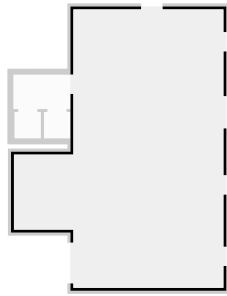
Sala Consiliere T1

TOTAL AREA: 86.05 m² • LIVING AREA: 86.05 m² • FLOORS: 1 • ROOMS: 1



▼ Meeting Room Ground Floor

WIDTH: 8.73 m • LENGTH: 11.60 m • CEILING HEIGHT: 3.45 m
AREA: 80.24 m² • PERIMETER: 40.65 m



▼ Meeting Room/Ground Floor

1 FRENCH DOOR

Height
3.44 m



2 DOUBLE HINGED DOOR

Height
2.80 m



4 HINGED DOOR

Height
2.10 m



5 AWNING WINDOW

Height
3.00 m



6 AWNING WINDOW

Height
3.00 m



7 AWNING WINDOW

Height
3.00 m



THIS FLOORPLAN IS PROVIDED WITHOUT WARRANTY OF ANY KIND. SENSOPIA DISCLAIMS ANY WARRANTY INCLUDING, WITHOUT LIMITATION, SATISFACTORY QUALITY OR ACCURACY OF DIMENSIONS.

0 2 4 6m

1:129
Page 4/5

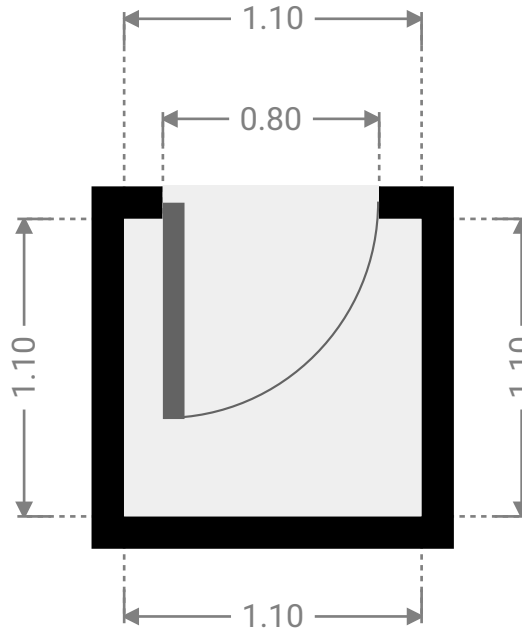
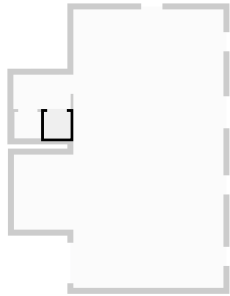
Sala Consiliere T1

TOTAL AREA: 86.05 m² • LIVING AREA: 86.05 m² • FLOORS: 1 • ROOMS: 1



▼ WC Ground Floor

WIDTH: 1.10 m • LENGTH: 1.10 m
AREA: 1.21 m² • PERIMETER: 4.40 m



▼ WC Ground Floor

WIDTH: 1.10 m • LENGTH: 1.10 m
AREA: 1.21 m² • PERIMETER: 4.40 m

